

# *Press-Book*

# *Poland Syndrome*



3D custom-made implants

*Type 1 : Correct subcutaneous plane*

*Type 2 : More atrophic subcutaneous plane*

*Type 3 : Atrophy of the subcutaneous plane with thoracic deformation*

*Type 4 : Redo of previous correction failure (Latissimus Dorsi Flap, breast implants)*

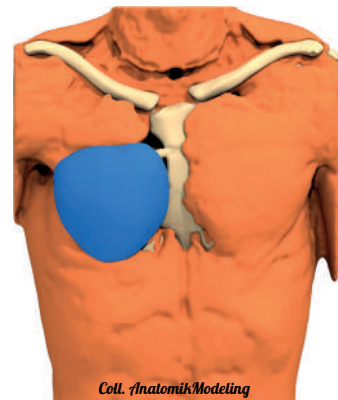
*Type : 1*

*Male*

*Before*



*1 year later*



Anatomik  
Modeling

3D custom-made implants

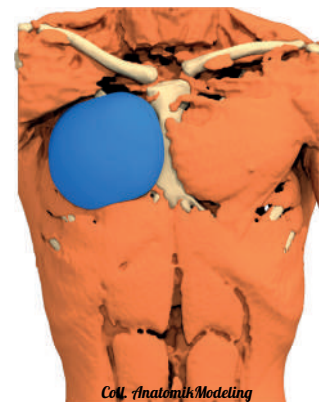
**Type : 2**

**Male**

**Before**



**3 months later**



**Type : 3**

**Male**

**Before**



**3 months later**



**Anatomik  
Modeling**

3D custom-made implants



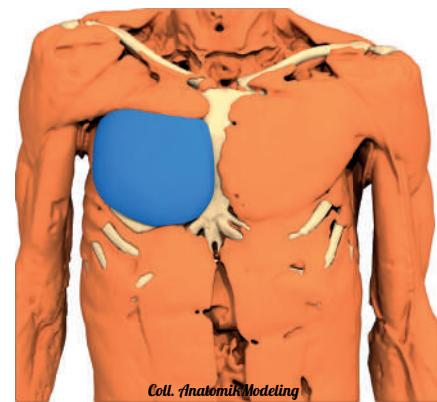
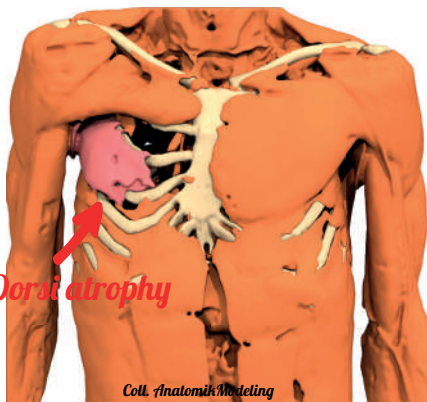
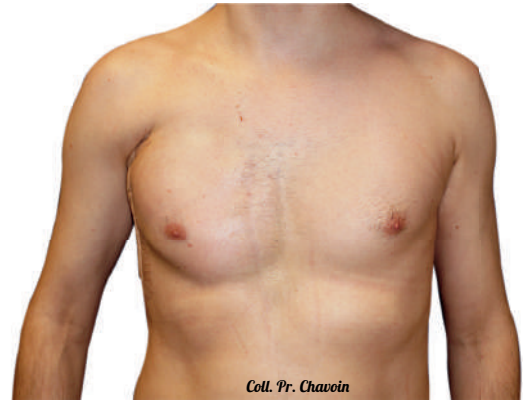
*Type : 4*

*Male*

*Before*



*3 months later*



*Latissimus Dorsi atrophy*



3D custom-made implants

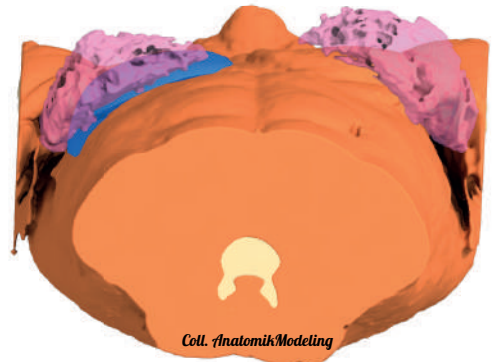
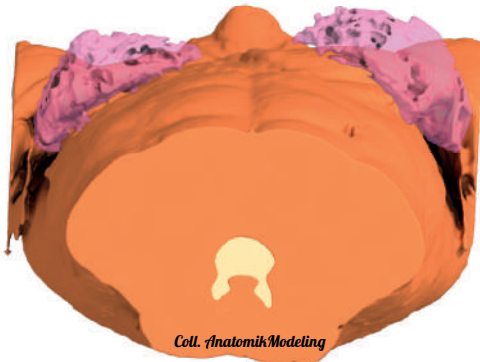
**Type : 1**

**Female**

**Before**



**3 months later**



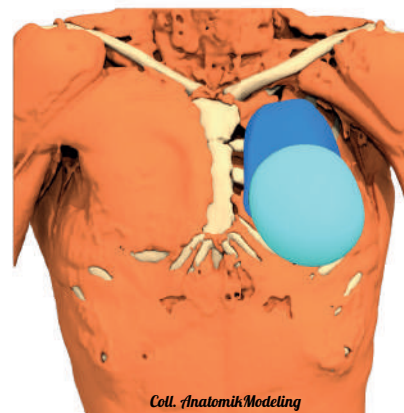
**Type : 2**

**Female**

**Before**



**1 year later**  
(with a left mammary implant  
6 months after the operation)





**Type : 3**

**Female**

**Before**



**1 year later**  
*(with a left mammary implant  
6 months after the operation)*



**Anatomik  
Modeling**

3D custom-made implants



**Type : 4**

**Female**

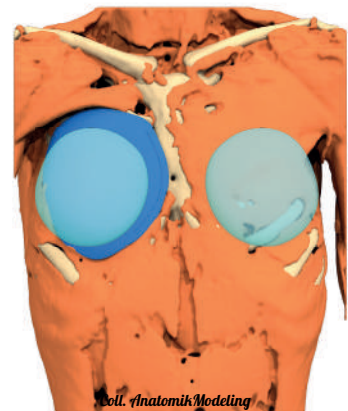
**Before**



**1 year later**  
*(with mammary implants  
6 months after the operation)*



**Retractable hull**



**Failure of Right Poland correction  
with mammary implants**

**First : mammary implants removal and  
3D thoracic implant implementation  
Then : new mammary implants**